

Machined Secure Taper (MST)

Customers around the world demanded RIMEX produce a 'wedge' style rim to replace standard 57 and 63" OEM rims. RIMEX MST wheels are available in either the standard 5-piece, DGS or IGLR assemblies.

Key Features

Taper design is superior to standard designed products

- Reduces moving or flexing of components
- Component life extended
- Reduced wear and fatigue = increased safety

Fully machined and truly round in critical areas

- Improved rim component and tire bead fit

Tire beads are secure and stable

- Air loss significantly reduced
- Helps tires run cooler and maintain consistent air pressure
- Increased tire life. Prevents wear and damage to sidewall

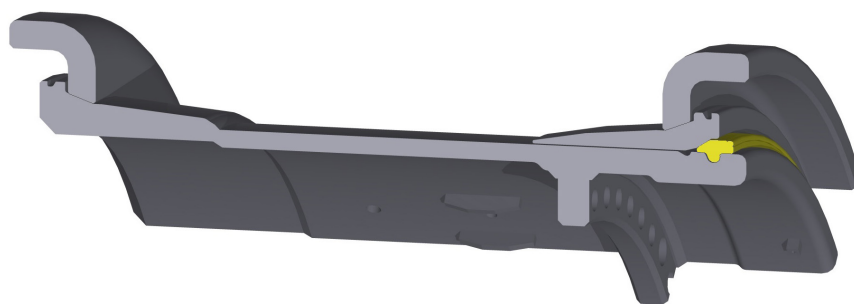
Knurless design

- Eliminates indexing or slippage between bead band and tire bead

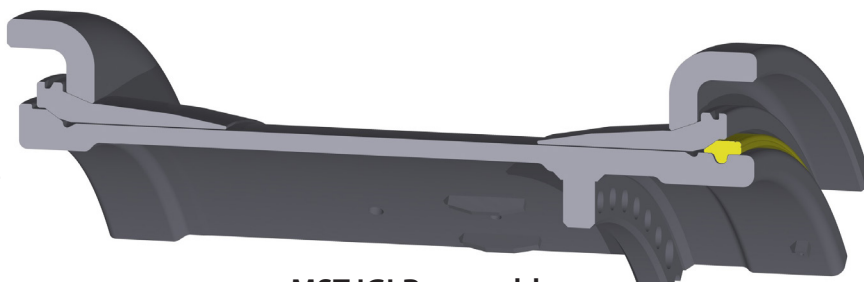
MST lock rings have two engraved grooves

- Easily identifiable
- Only compatible with MST and WTR components

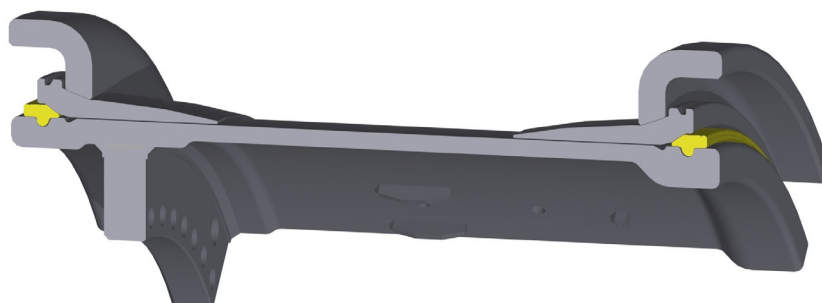
Fully compatible with 57 and 63" Wedge Type Rim (WTR) components



5 piece MST assembly



MST IGLR assembly
(to be used with DGS)



MST DGS assembly
(position sensitive outer dual wheel)