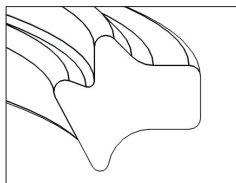


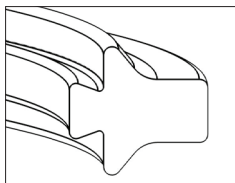
Lock Ring Profiles

INDUSTRY STANDARDS—INTERCHANGEABLE

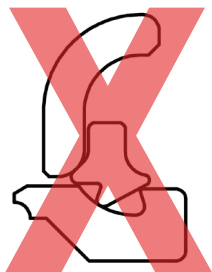
WI Style



RIMEX I Style



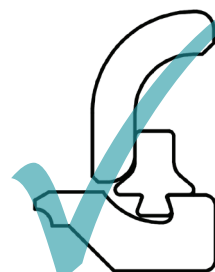
- Commonly used in high pressure applications—20 and 24"
- 3 and 4 piece, tube type rim designs
- Standard lock ring can easily be mismounted
- RIMEX I lock ring CAN NOT be mismounted



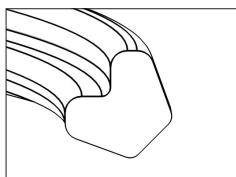
INCORRECT
installation of
WI lock ring



CORRECT
installation of
WI lock ring

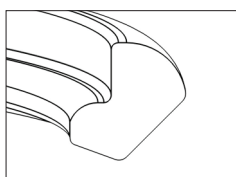


ALWAYS CORRECT
RIMEX I lock ring
engineered to eliminate
mismounting



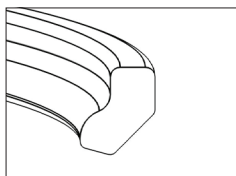
T Style

- Used on 3, 4 and 5 piece wheels for light duty graders, loaders and haulage
- RIMEX uses this design in 10 through 38" rim diameters



EM Style

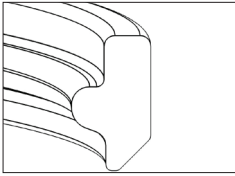
- Used on 3, 4 and 5 piece wheels and rims in a wide variety off applications
- RIMEX uses this design in 10 through 45" rim diameters



EV Style

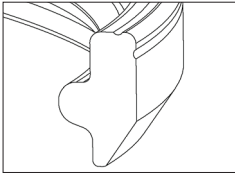
- Used on 33, 35 and 49" haulage wheels/rims
- Lighter duty design
- For higher PSI or heavier load applications, RIMEX recommends EMH

Contact your local RIMEX Wheel Expert for more information: www.RIMEX.com/locations



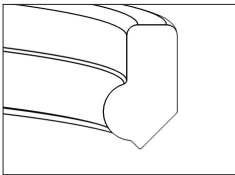
HDT Style

- Industry standard for 51 through 63" applications
- RIMEX uses on a variety of applications from 45 through 63"
- RIMEX also produces 2 piece and articulating (ALR) models for DGS/IGLR fitment



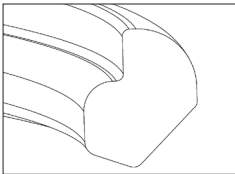
WTR / WEDGE; MS / T Style

- Topy design with 35° angle in 63 and 57" designs
- MS / T lock ring is the RIMEX equivalent
- Must be used in combination with WTR style components only
- Identified by small groove in the top outer face of component
- RIMEX also produces equivalents of all wheel components as well as 2 piece and articulating (ALR) models



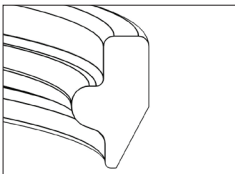
Phase II Style

- Utilized by Komatsu Dresser America



EMH Style

- RIMEX exclusive design only compatible with EMH gutter sections
- For increased safety in high pressure, heavy load applications
- Used on 25 through 49" diameters for a wide variety of applications
- RIMEX also produces 2 piece models for DGS fitment
- Painted blue for easy identification



TSR Style

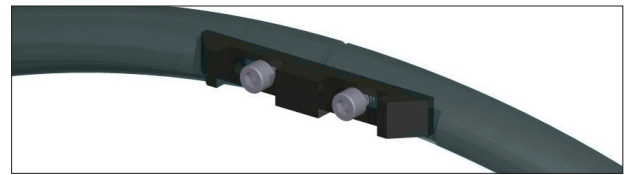
- RIMEX exclusive design only compatible with TSR components [NOT interchangeable]
- Designed for increased safety and the longest service life in the industry
- Used on 25 through 63" applications
- RIMEX produces 2 piece models for DGS fitment
- Painted red for easy identification

Always consult a
RIMEX Wheel Expert
to ensure the components
being utilized are suitable for
the tire as well as for the
loads and speed of
your operation.

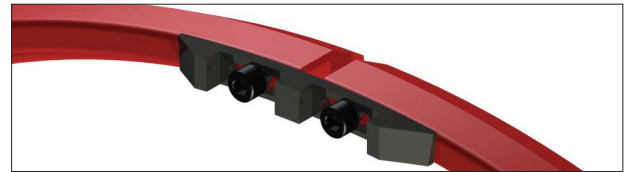
2 Piece Lock Rings

Currently, RIMEX produces 2 piece lock rings for DGS/IGLR wheel styles in the following sizes and profiles (49-33 EMH; 63-49 HDT/TSR/MST):

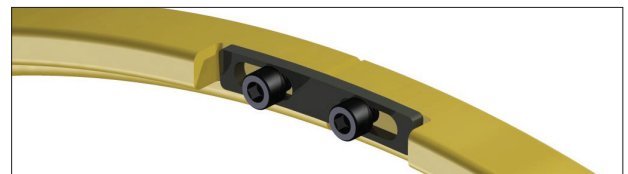
SIZE	PROFILE	RETAINER KIT
63"	HDT - 930	780-000-0108
	HDT - 797	780-000-0108
	TSR	780-000-0108
	MST	780-000-0108
57"	HDT	780-000-0108
	TSR	780-000-0068 [special]
	TSR	780-000-0108
51"	TSR	780-000-0108 780-000-0068 [special]
51"	HDT	780-000-0108
49"	HDT	780-000-0108
49"	EMH	780-000-0120
35"	EMH	780-000-0120



780-000-0120



780-000-0108



780-000-0068

NOTE: Other styles are available upon request

TSR/HDT/EMH Split Lock Ring Mounting and Demounting Instructions

WARNING:

FAILURE TO FOLLOW THESE MOUNTING & DEMOUNTING INSTRUCTIONS COULD RESULT IN SERIOUS OR FATAL INJURY.

INSTALLATION:

1. Use RIMEX supplied fasteners only.
2. Use **RED TSR lock rings** on RIMEX style TSR wheels only.
Use **YELLOW HDT lock rings** on MES or OEM compatible wheels only.
Use **BLUE EMH lock rings** on RIMEX EMH style wheels.
3. Inspect **ALL** components for wear or damage before assembly.
4. Ensure lock ring grooves are clear of dirt or debris.
5. Place lock ring halves into lock ring groove on wheel/rim. Ends of lock ring halves **MUST NOT** touch, minimum $\frac{3}{16}$ " gap.
6. Secure in place with supplied clips and bolts.
7. Hand tighten all bolts and re-tighten after tire inflation.

NOTE: supplied bolts are one time use only, **DO NOT REUSE**.

REMOVAL:

1. Ensure tire is **COMPLETELY** deflated. If dual wheels, both tires must be deflated.
2. Loosen and remove both clips and remove both lock ring segments.
3. Discard bolts.

MAINTENANCE:

Every 500 hours check fasteners and lock ring halves to ensure secure fit.

Contact your local RIMEX Wheel Expert for more information: www.RIMEX.com/locations

Articulating Lock Ring (ALR)

The ALR is engineered to increase safety. Unlike traditional one-piece lock rings, there is no stored energy released when the part is removed. Damaged hinges are easily replaced and do not result in a scrapped lock ring.

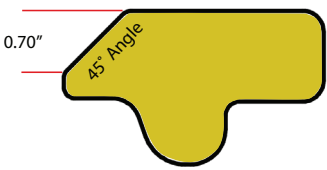
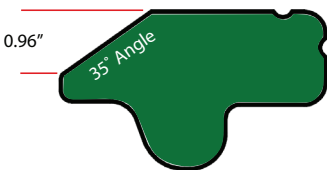
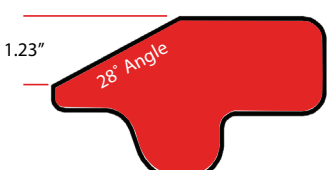
RIMEX manufactures the ALR for 51-63" lock ring styles (HDT, TSR, MST) to suit all equipment types. Additional sizes in development.



Quick Reference Lock Ring Comparison

Images below demonstrate the differences between the common 51-63" lock ring styles. The larger surface area of the TSR product offers a better fit between lock ring taper and bead seat band taper.

Using fully machined RIMEX components results in decreased movement and indexing of rim parts and consequently increased product strength and longer service life.

STYLE		
HDT		
WTR (Wedge)		37% more surface area than HDT
TSR		57% MORE surface area than HDT 20% MORE surface area than WTR

RIMEX Visual Inspection Gauges

Gutter Groove Profile Gauge 782-000-0028 ①

RIMEX engineered the **Gutter Groove Profile Gauge** to help identify the lock ring and o-ring grooves on a wheel. It is designed to fit flush against the wheel base, with any gaps between the gauge and the wheel indicating worn away material on the base. If the wear exceeds 2 mm, the gutter section should be replaced.



Grooves and Lock Ring Gauge Kit 782-000-0126 ②

The **Grooves and Lock Ring Gauge Kit** is compact and easy to store. Like the **Gutter Groove Profile Gauge**, identifies both what lock ring groove is in a wheel as well as allows for checking what type of lock ring one may have.

Side Ring Profile Gauges

Our **Side Ring Profile Gauges** help identify the style of side ring and act as a visual aid to determine the amount of wear.

It is important to evaluate the level of wear between the side ring and the bead band/back lip as well as the outer diameter of the side ring where contact is made with the tire. Once the depth of the material in the inner lip and/or the outer diameter has eroded to a level of 2 mm, we recommend the side ring be removed from service.

RIMEX currently offers three **Side Ring Profile Gauges** for large OTR product:

- ③ 782-000-0026—suits 6.0", side rings (S6057)
- ④ 782-000-0027—suits 5.0", side rings (S5051, S5057, S5063)
- ⑤ 782-000-0124—suits 4.0", side rings (S4049)

